

The logo for KEI, consisting of the letters 'K', 'E', and 'I' in a stylized, blocky font with a white outline and a blue fill. The background of the entire page is a vibrant blue and green digital pattern with glowing lines and a central globe-like structure.

# KEI-3240

## DATA LOGGER SYSTEM

Next Generation Data Logger System

NK, LRS, ABS, GL  
Type Approved

DATA LOGGER SYSTEM

**Direct Connection to PC**

A 100Mbps Ethernet is used as network. Thus allowing PC (Personal Computer) in accommodation to connect directly. All screens on Data Logger can be obtained at PC.

**Wireless LAN**

The access point for wireless LAN can be arranged in various places like the engine room. Mobile PC shall provide free access to all the Data Logger screens.

**Hardcopy**

The log printer shall produce ordinary logbook and Hardcopy of all the Data Logger screens. Color and Monochrome are available.

**Compact Flash Disk**

Compact Flash Disk is available as data storage. The Chief engineer's log for more than 10 years can be stored. Computer processing of machinery data becomes easy.

**I/O can be installed in Any Place**

Lightweight and small profile I/O interface can be installed in any place. They can be placed inside of Main Switch Board /Group Starter Panel, that eliminates wiring cost.

**Japanese/English change over**

Language on the screen can be selected and changed between Japanese and English for each VDU (Visual Display Unit).

**Photographs in full color**

Real measured value can be superimposed on machinery color photograph so that much more real screen can be obtained.

ENG. CONTROL ROOM

LCD d

Highest processing speed makes Meter display as standard.

Mouse

Keyboard

AGU

Compact Flash Disk



Main Computer

The Chief engineer's log for more than 10 years can be stored in Compact Flash Disk.



Local Box

Display



64000 full color display, photograph, Bitmap are available.

Japanese/English change over



AGU



Keyboard



Mouse

Ethernet



A 100Mbps Ethernet is used as network.

The log printer shall produce Hardcopy of all the Data Logger screens. Color and Monochrome are available.



Intelligent I/O interface

Local Box for I/O interface becomes small, lightweight and flat for easy installation. 130mm depth.

Chief Engineer's Room

NOTE PC



PC in accommodation to show all screens on Data Logger.

1st Engineer's Room

NOTE PC



Internet



W/H



Engine Room

MOBILE PC



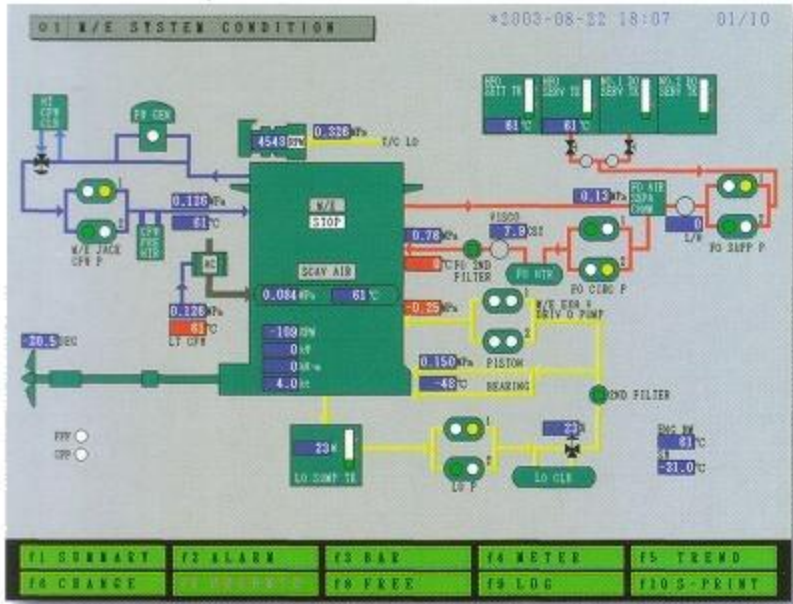
Wireless LAN



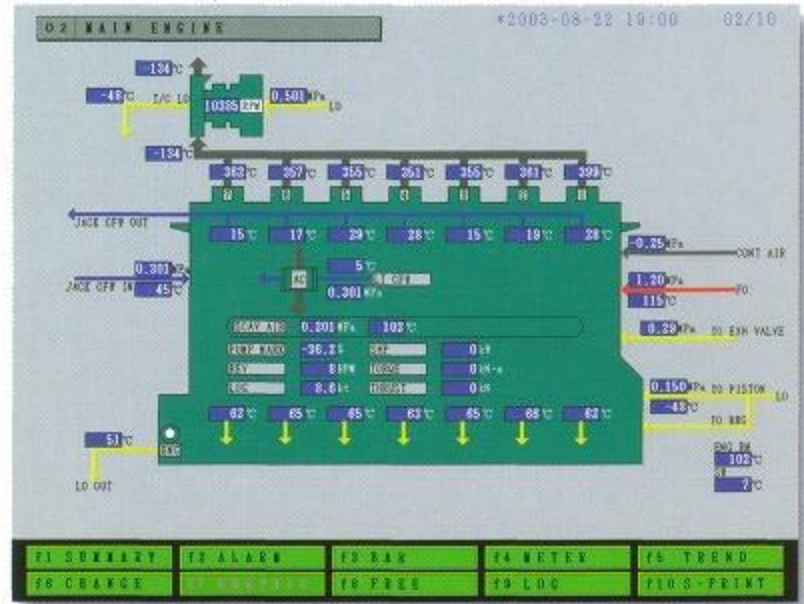
The access point for wireless LAN can be arranged in various places like the engine room. Mobile PC shall provide free access to all the Data Logger screens.

# Display Example

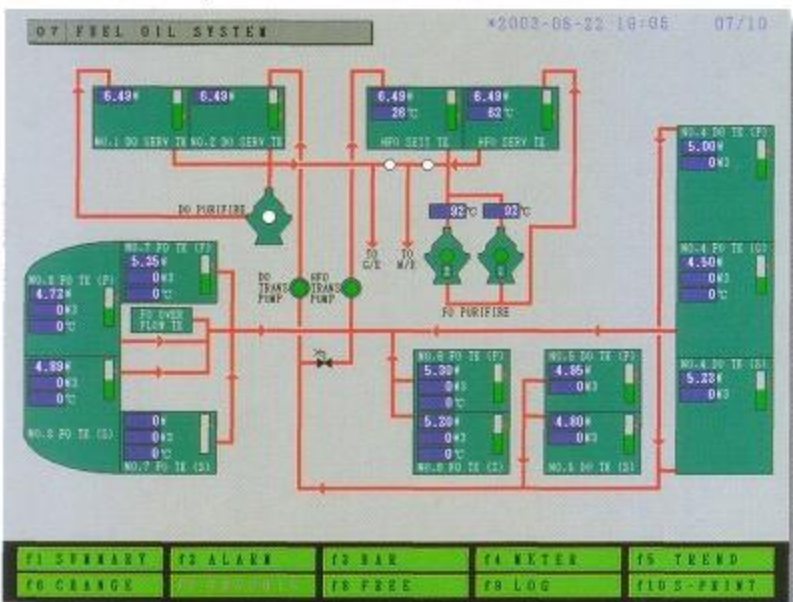
### Mimic Graphic (1)



### Mimic Graphic (2)



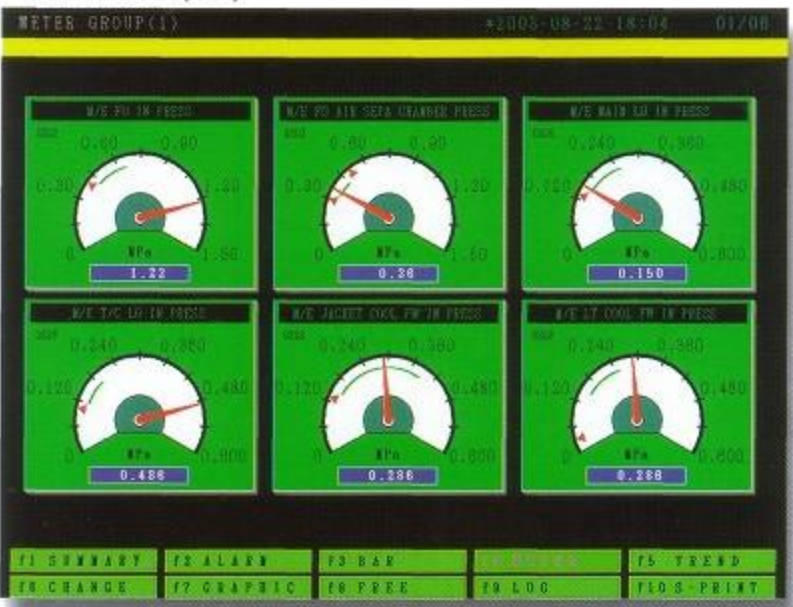
### Mimic Graphic (3)



### Engine Characteristic Curve



### Meter Display



### Trend Display

